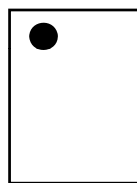
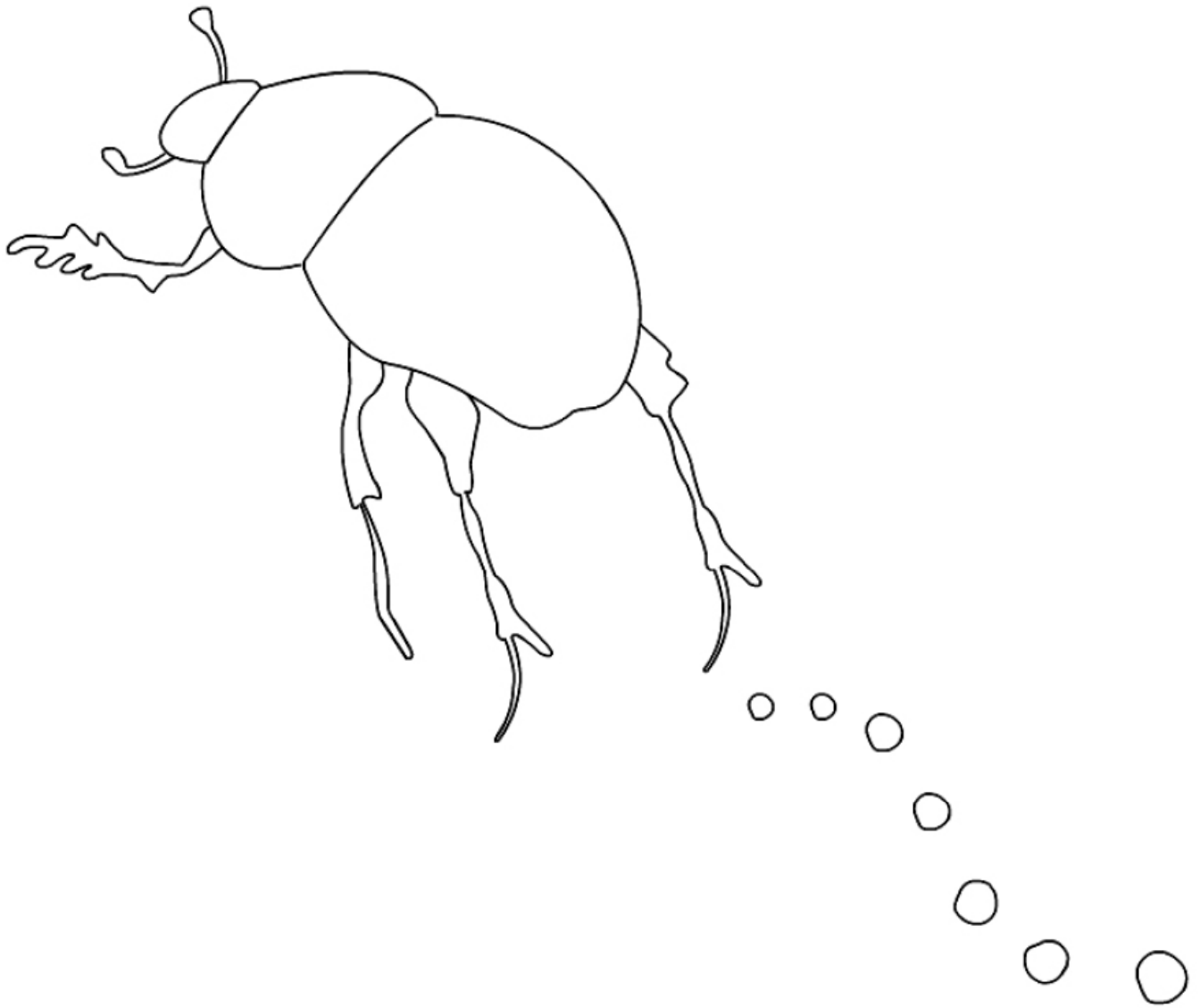


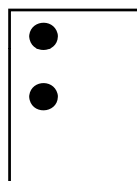
Aa



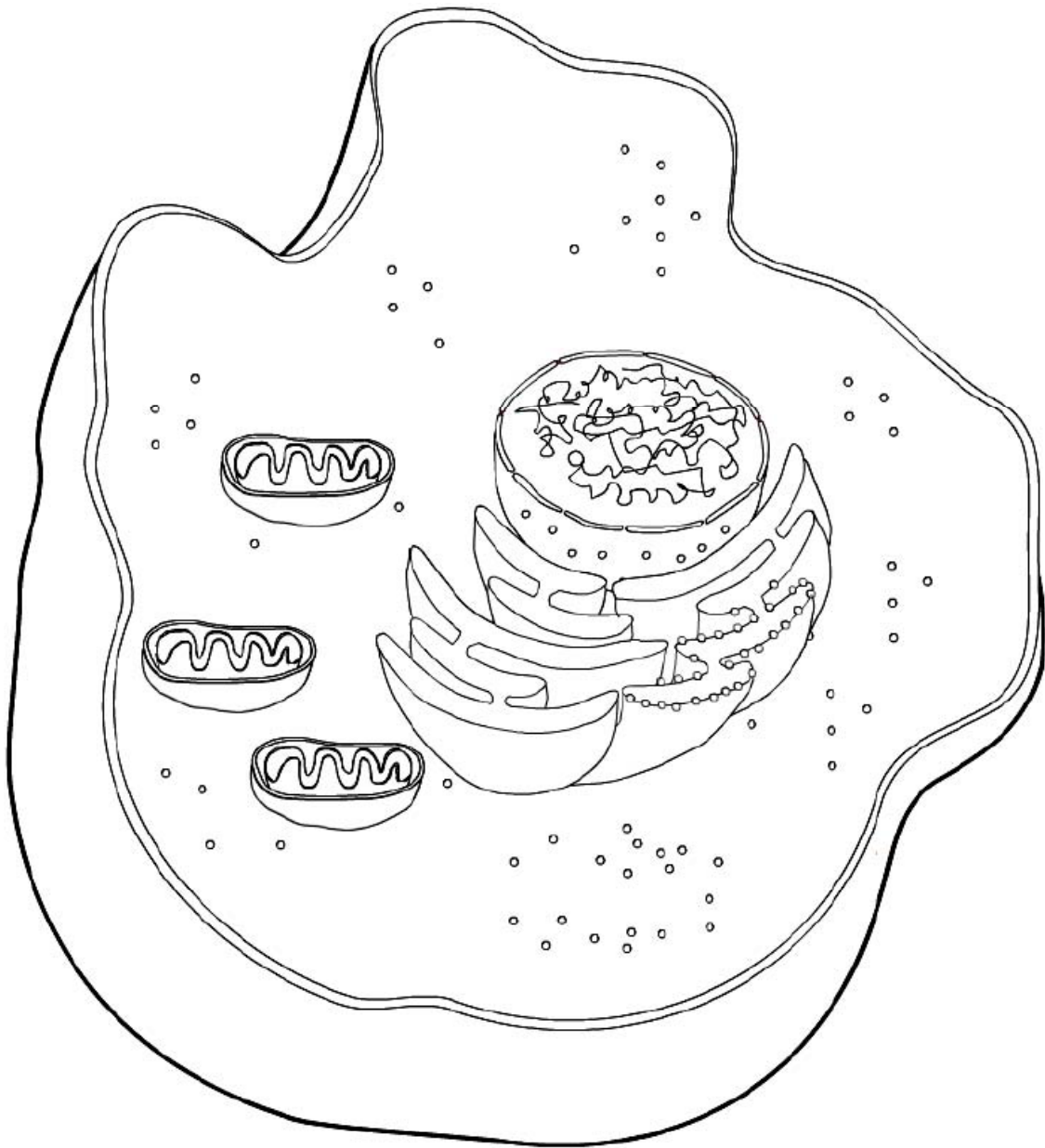
atom



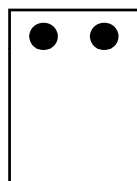
Bb
billebæsj



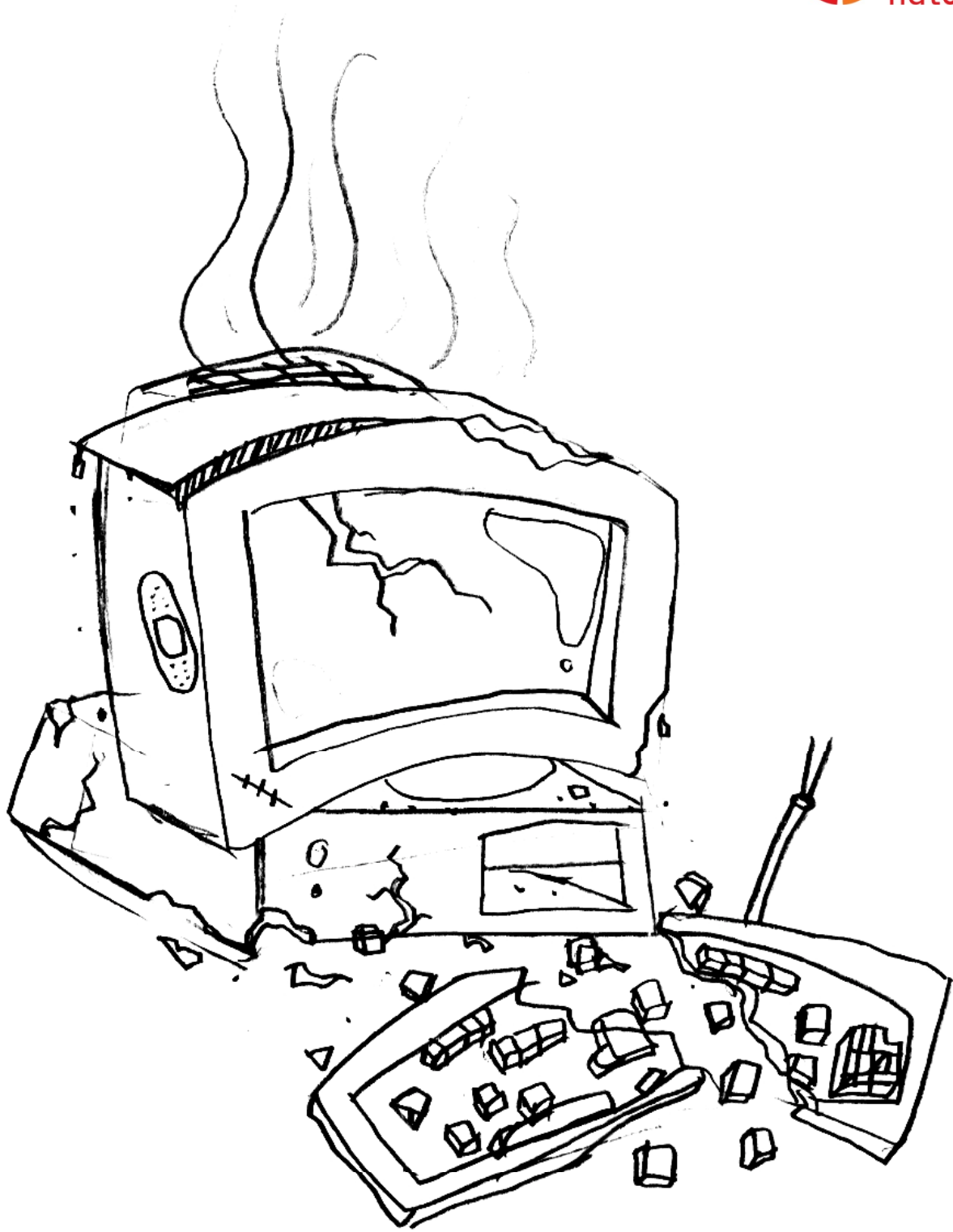
Dyrecelle



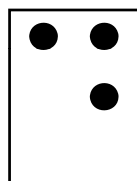
Cc

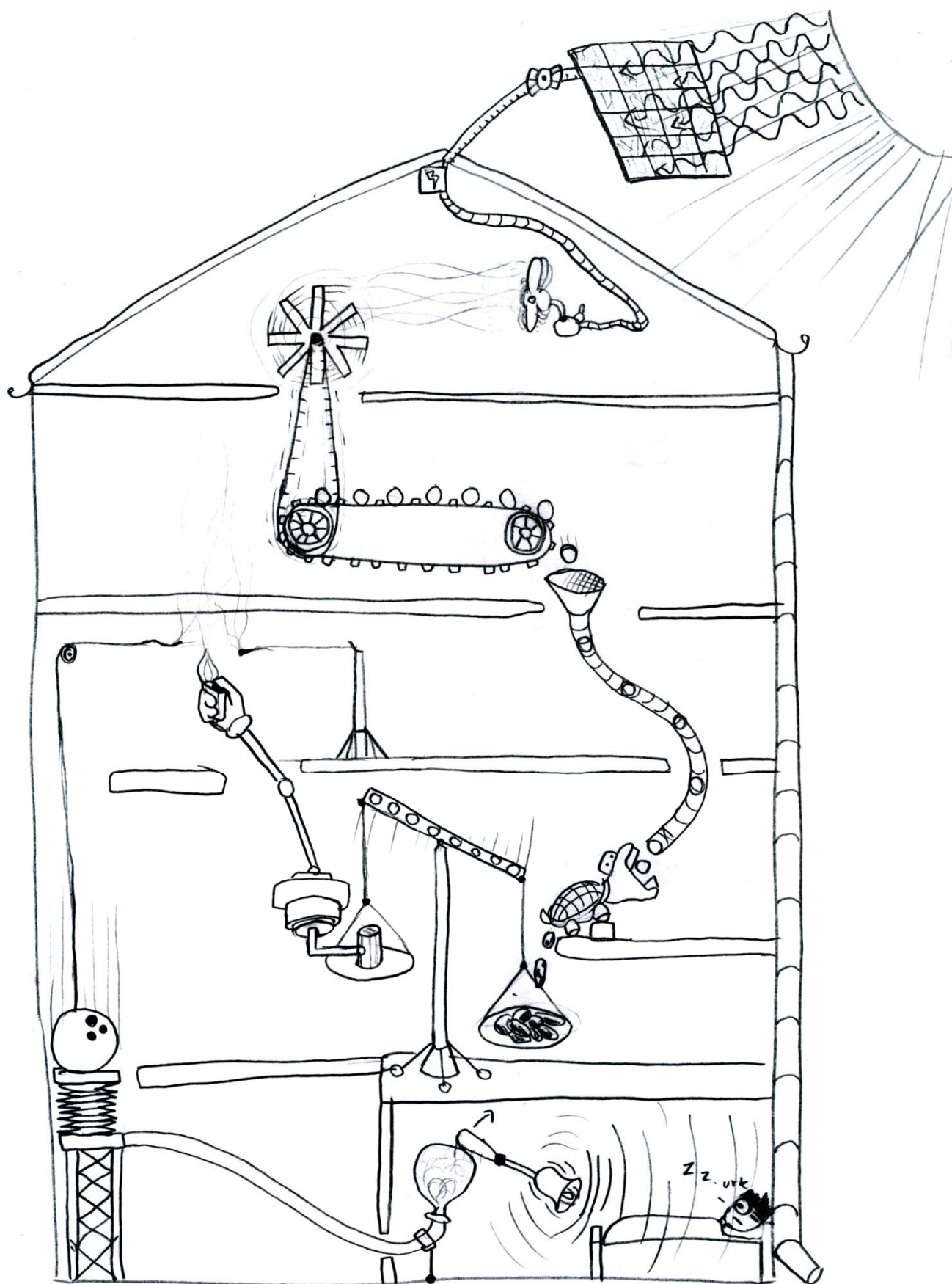


celle

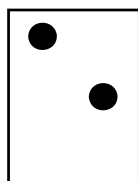


Dd
datakræsj



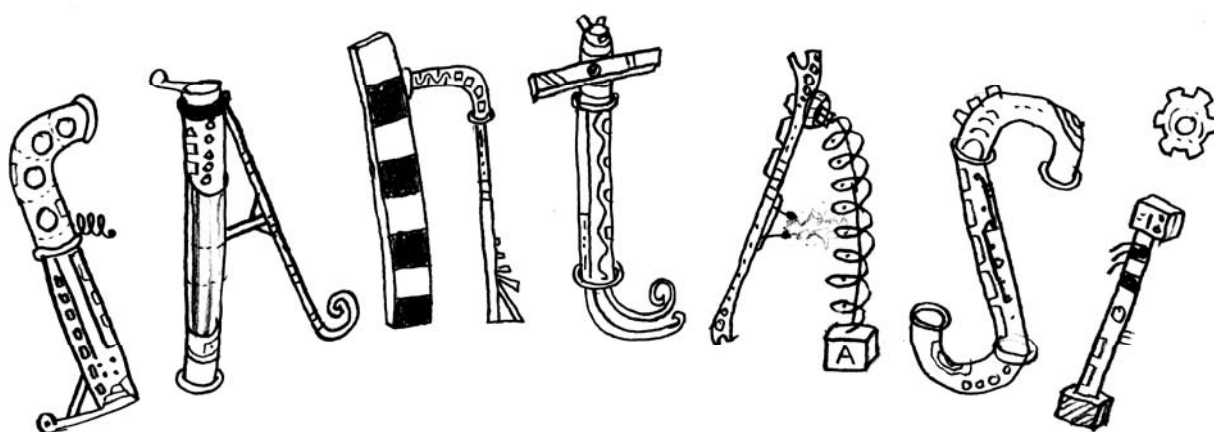


Ee

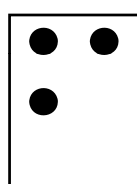


energi

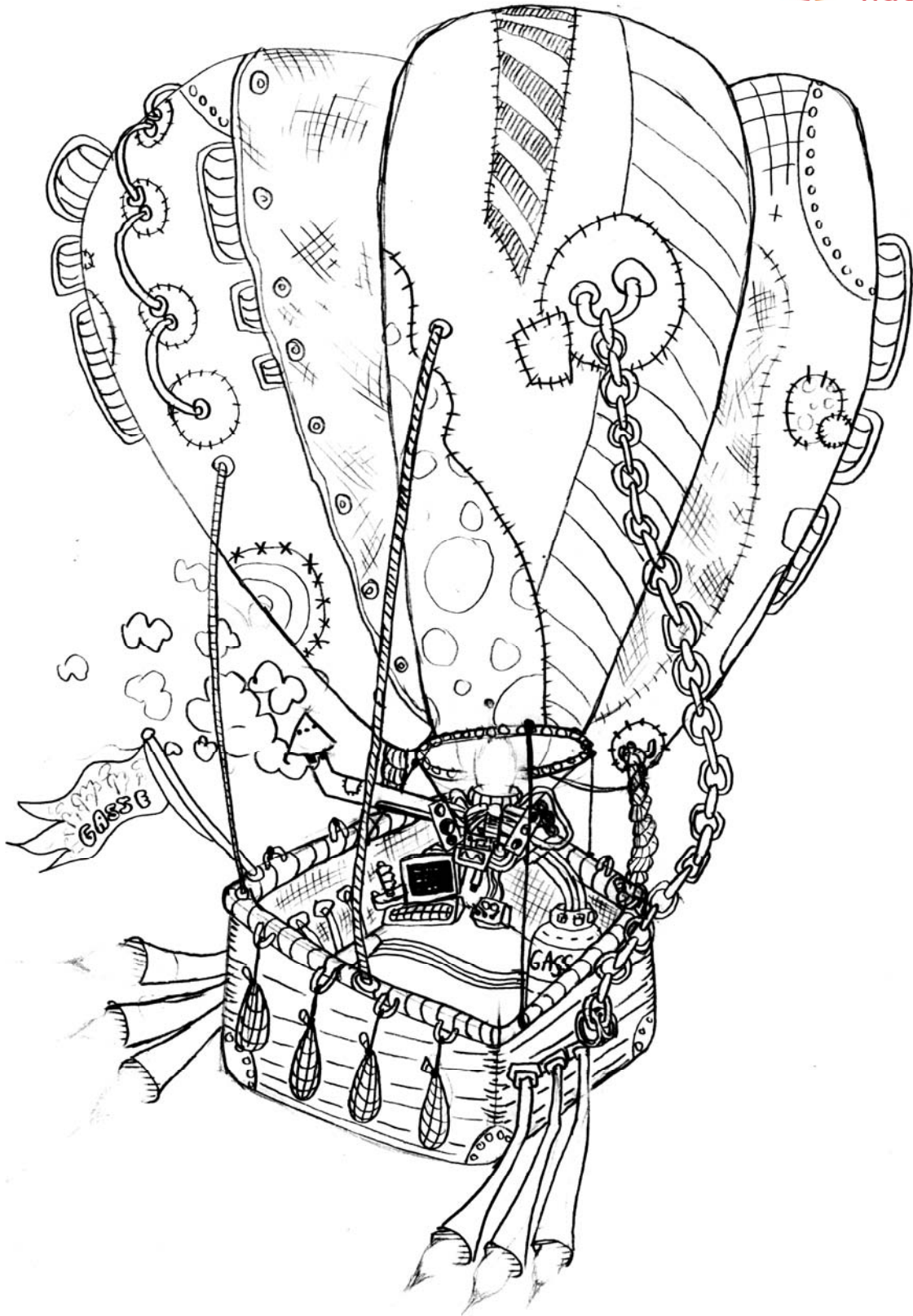
Bruk fantasien og tegn noe selv



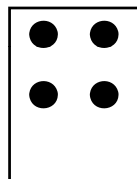
Ff

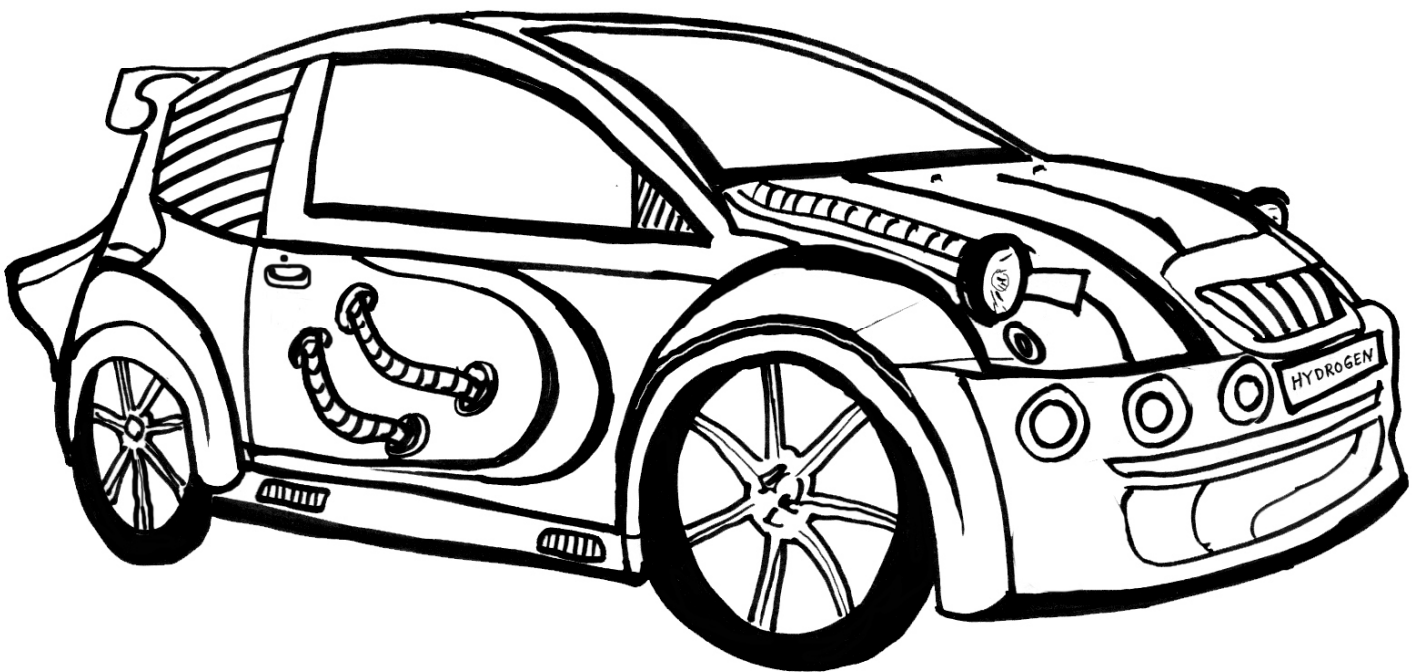


fantasi



Gg
gass





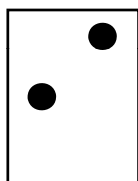
Hh

hydrogen





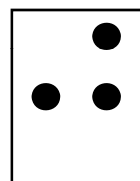
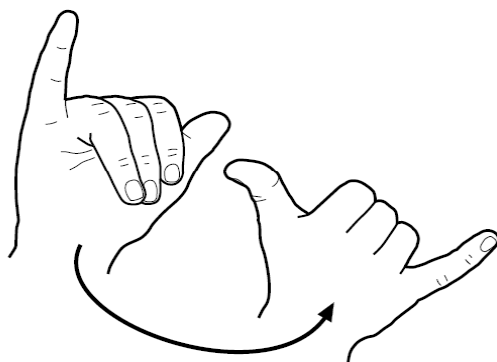
li



idè



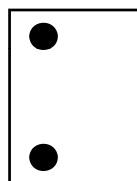
Jj
jord





Kk

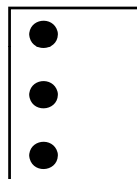
klima





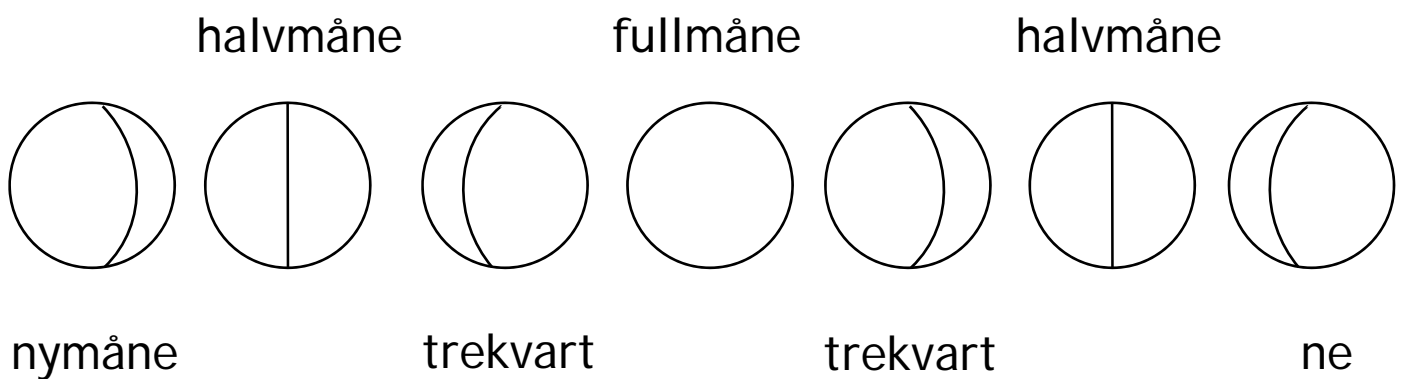
L I

liv og lys

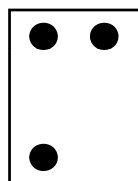


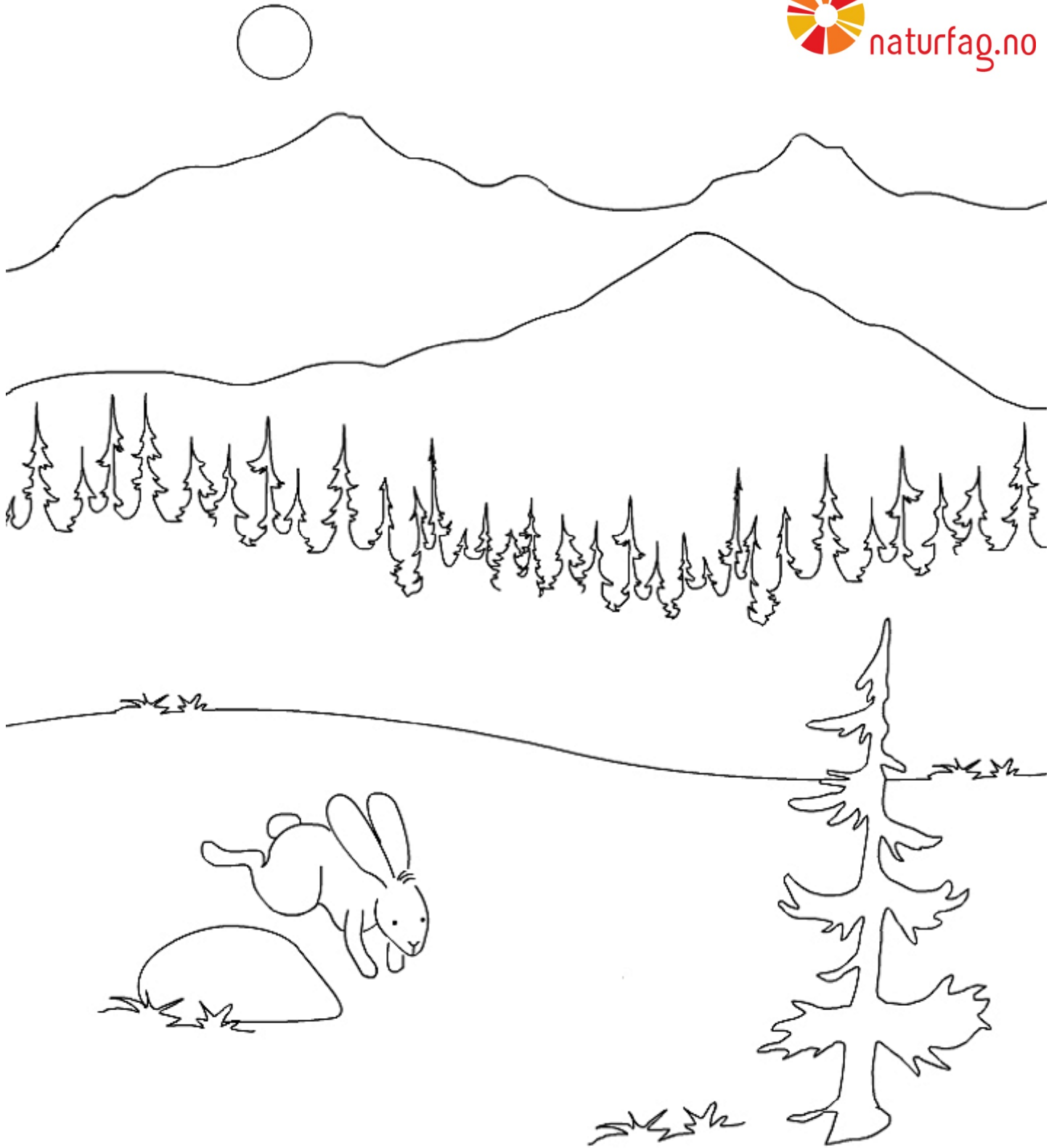
Månefaser

Fargelegg feltene som er synlig for oss med f.eks. gul farge og feltet som er ikke synlig med blå farge.

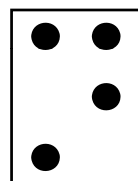


måne
Mm





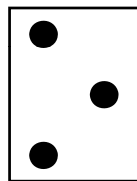
Nn



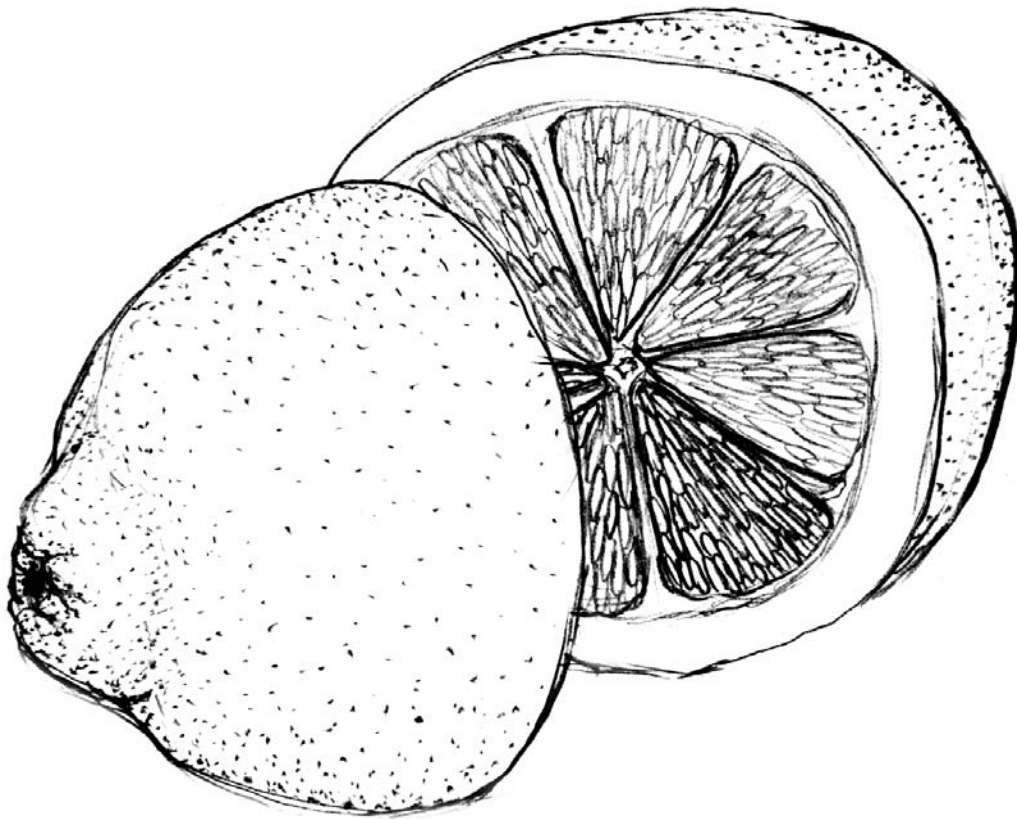
natur



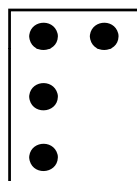
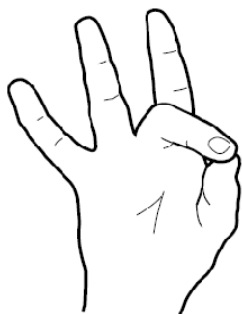
Oo



observere



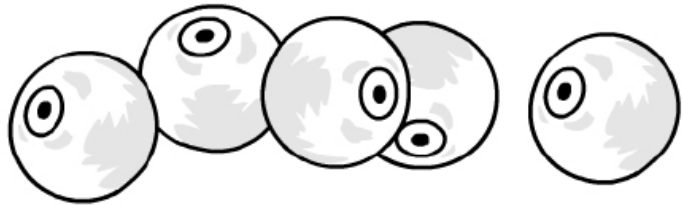
Pp
pH



Hva er riktig svar?

En stor bjørn som fikk magen sin undersøkt, hadde spist 184 000 blåbær på en dag! Hvor mange 10-liters bøtter tror du dette tilsvarer?

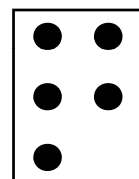
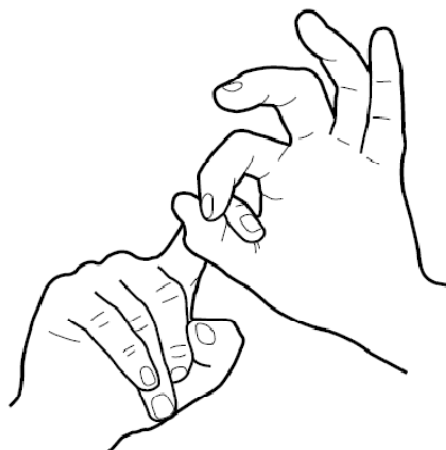
- 1 bøtte
- 4-7 bøtter
- 10-15 bøtter



Hvor lang kan tungen til en Maursluker være?

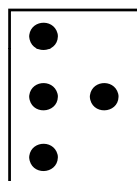
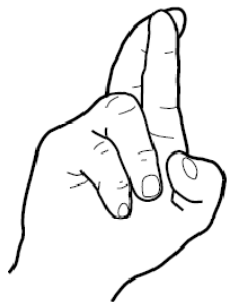
- Ikke lengre enn 10 cm
- Ikke lengre enn 30 cm
- Over 60 cm

Qq
quiz

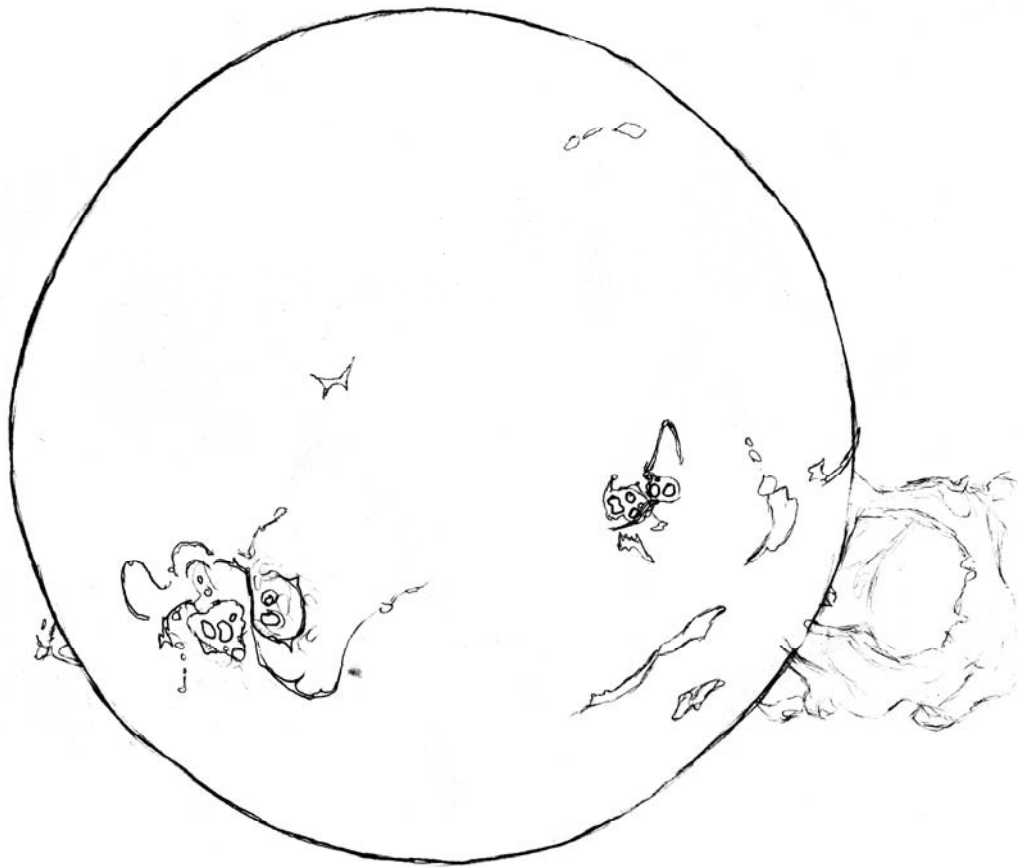




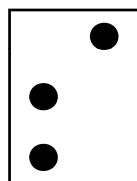
Rr

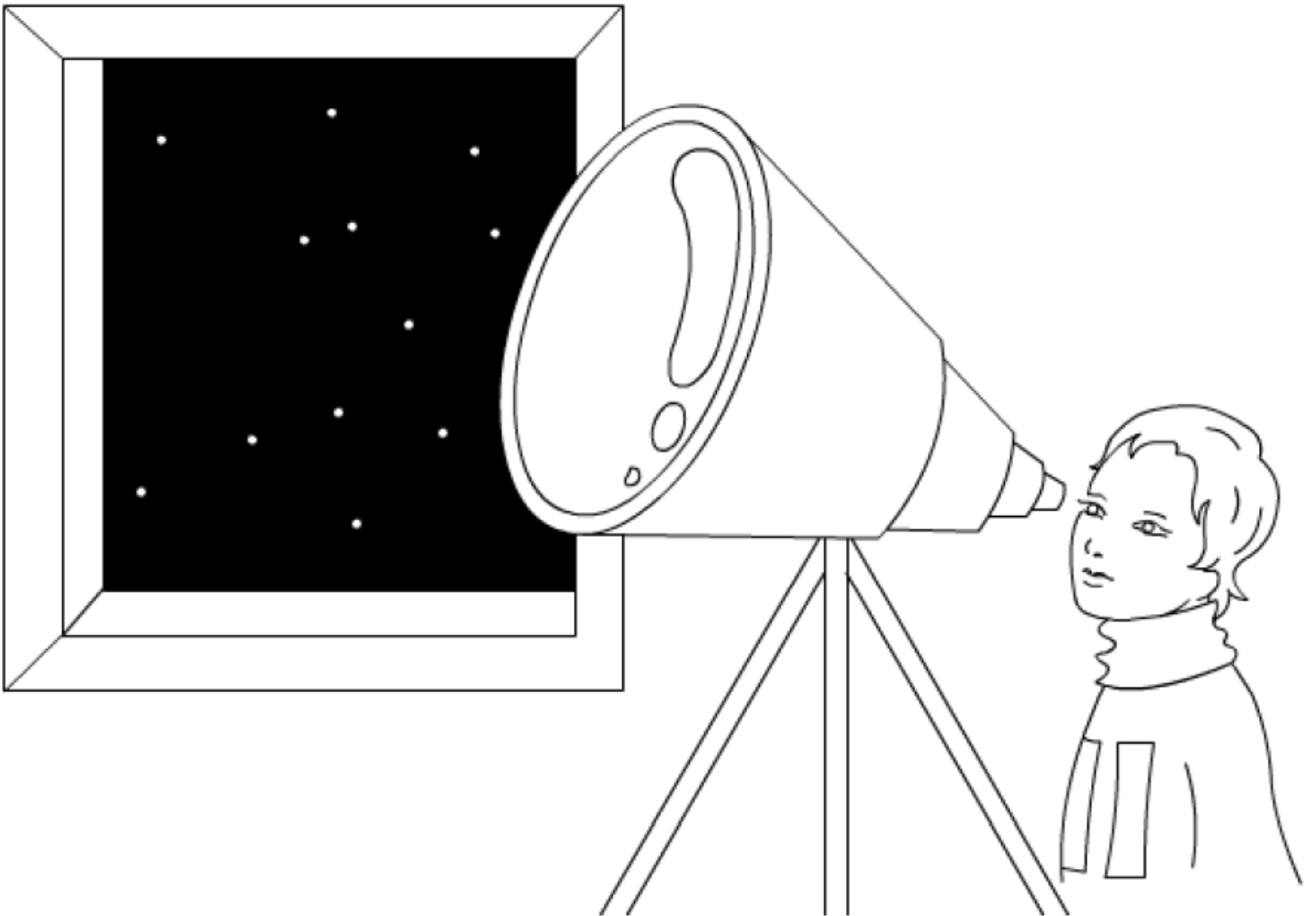


regn

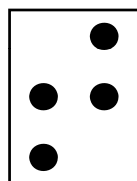


S s sol

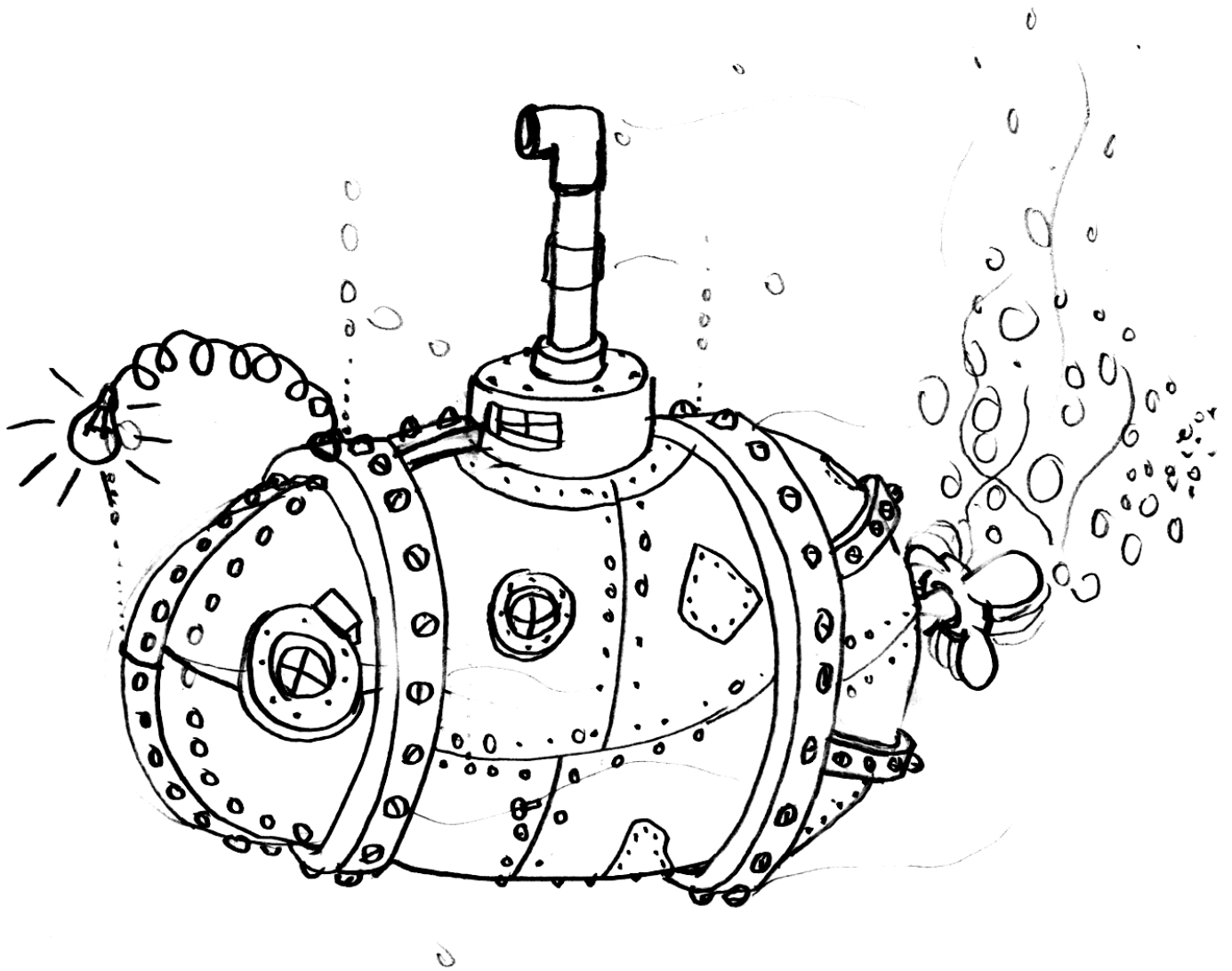




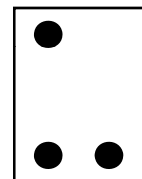
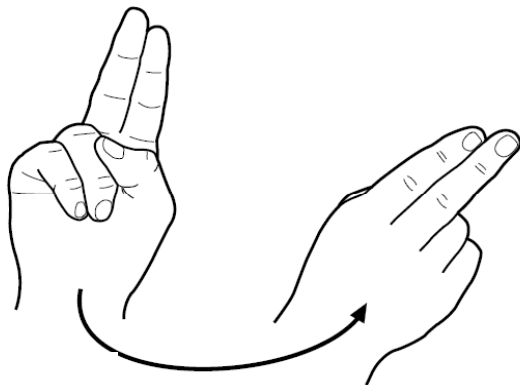
Tt



teleskop



ubåt
Uu

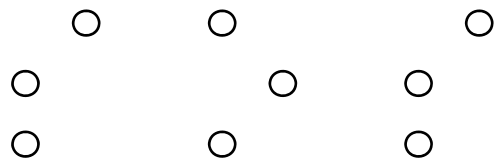


Nødsignal på tre måter

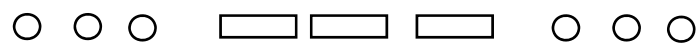
Bokstaver

SOS

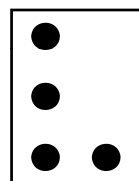
Blindeskrift



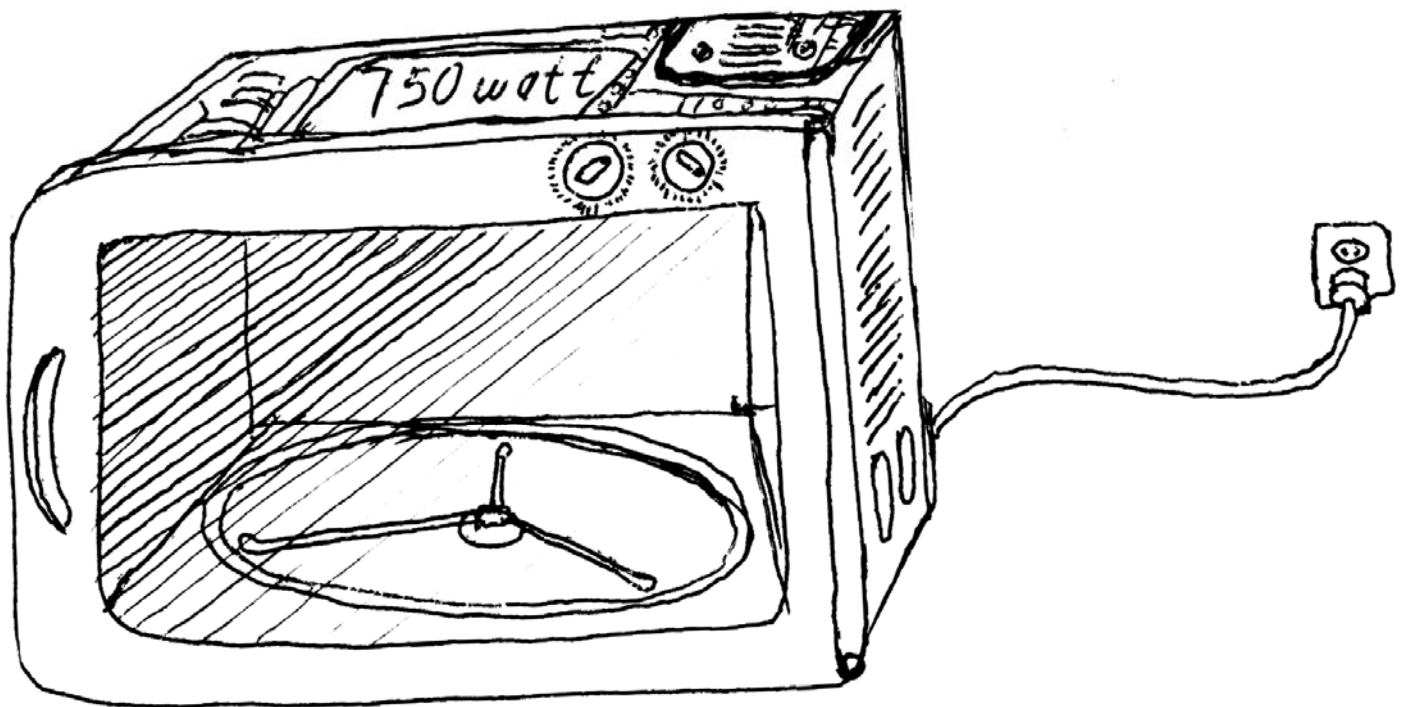
Morsekode



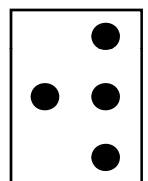
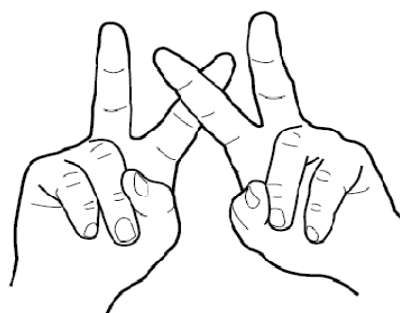
Vv



varselrop



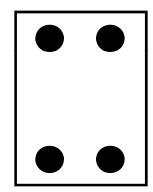
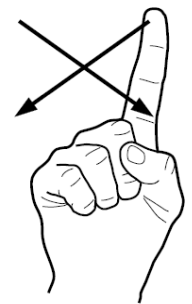
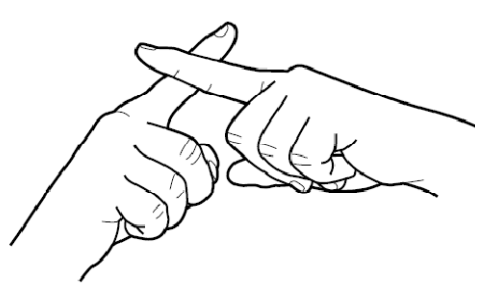
Ww watt

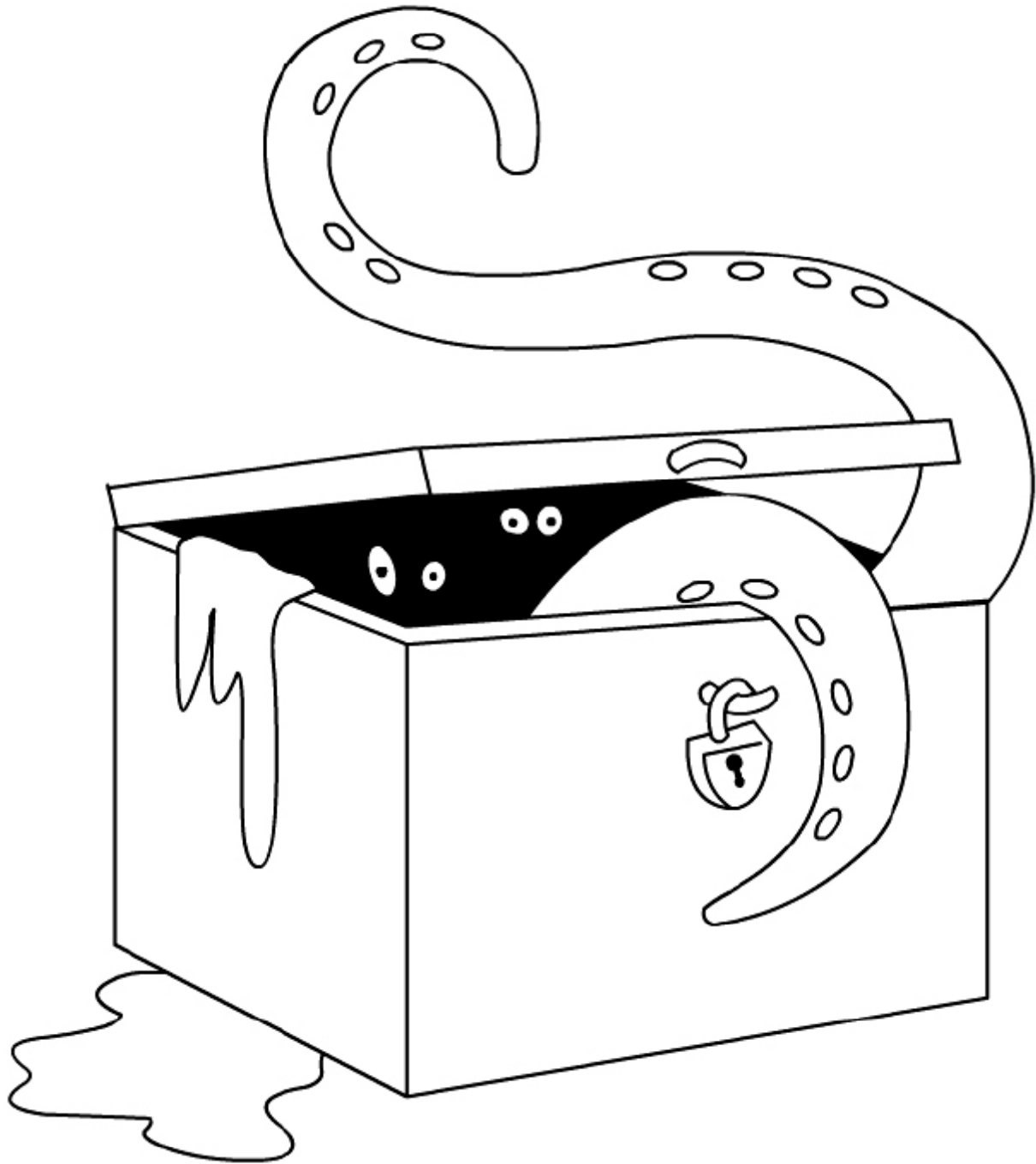




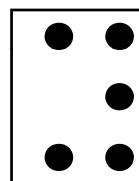
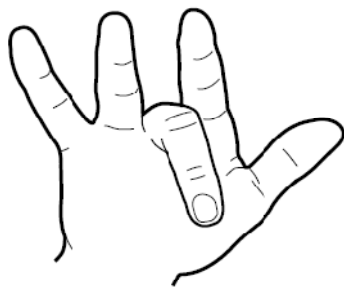
Xx

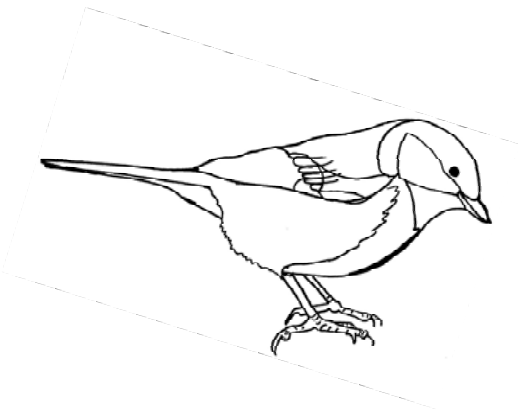
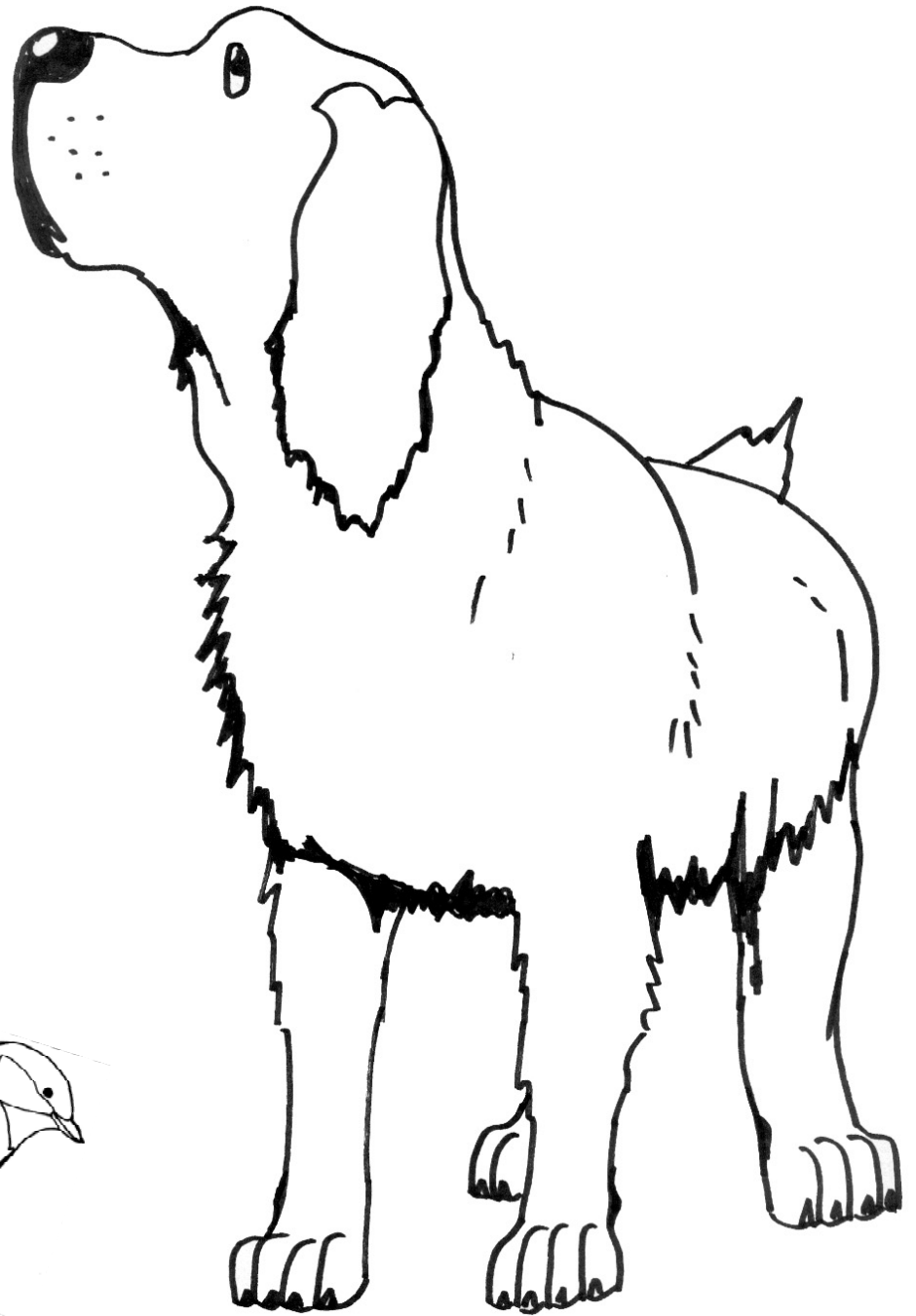
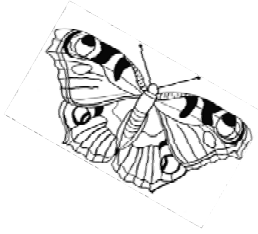
ukjent



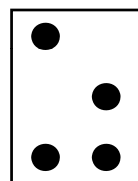
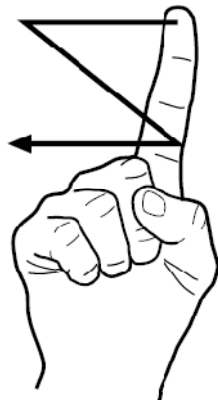


Yy
ukjent



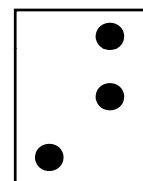


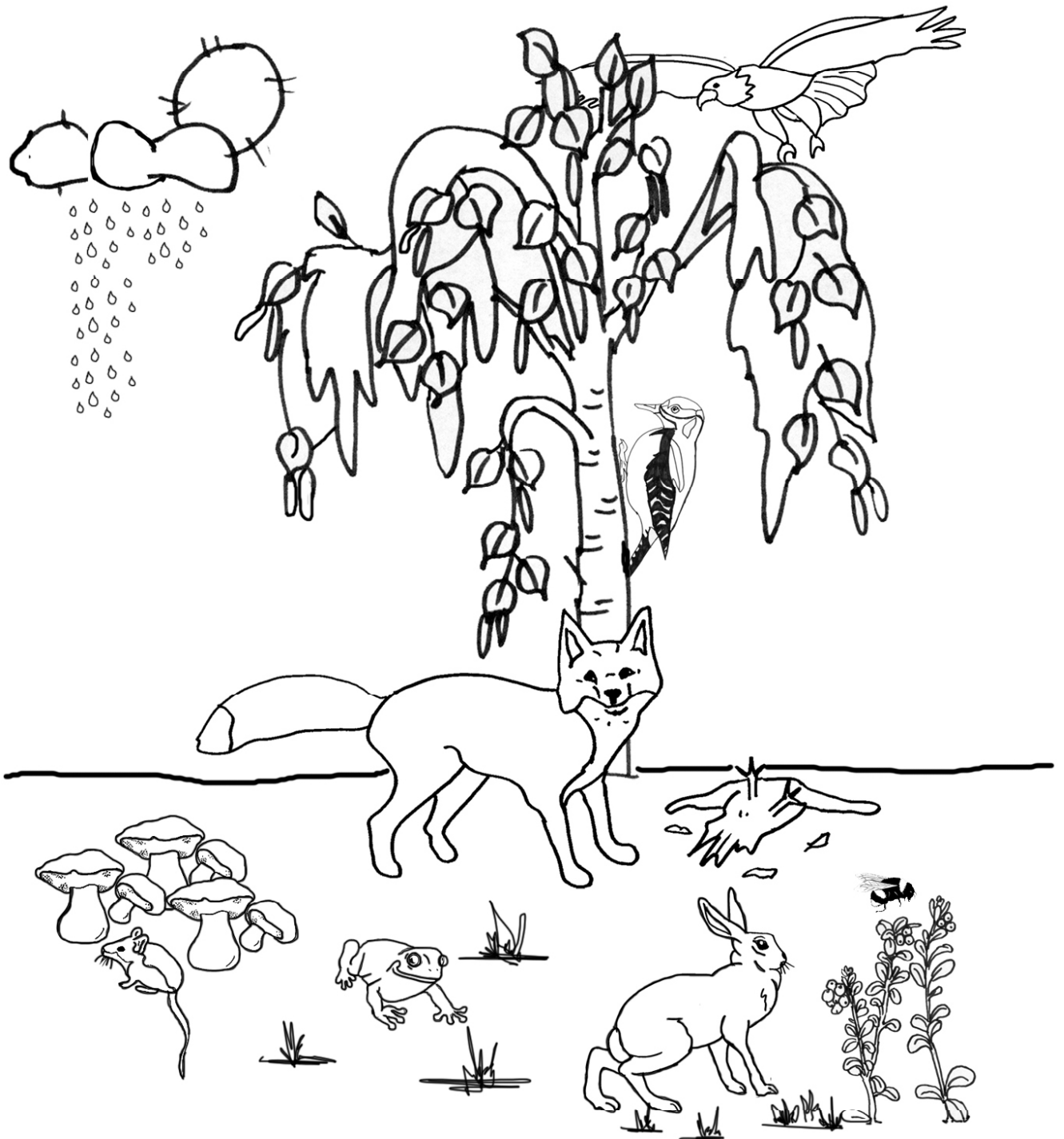
Zz
zoologi





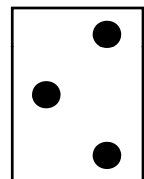
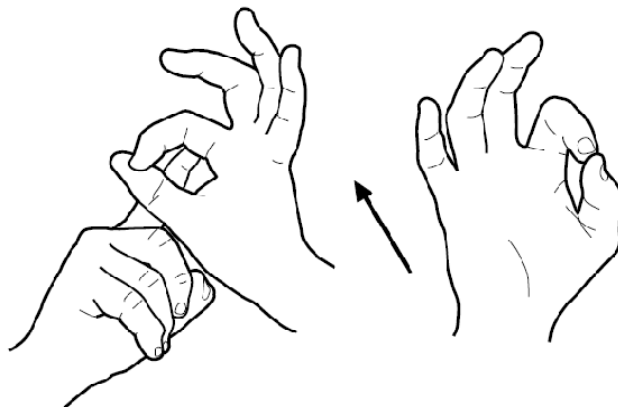
ærfugl
Æ æ



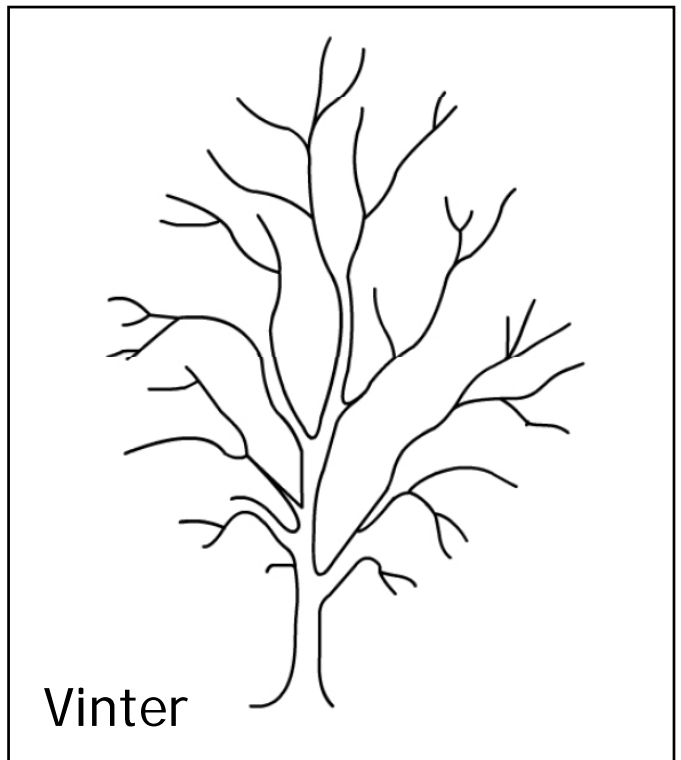
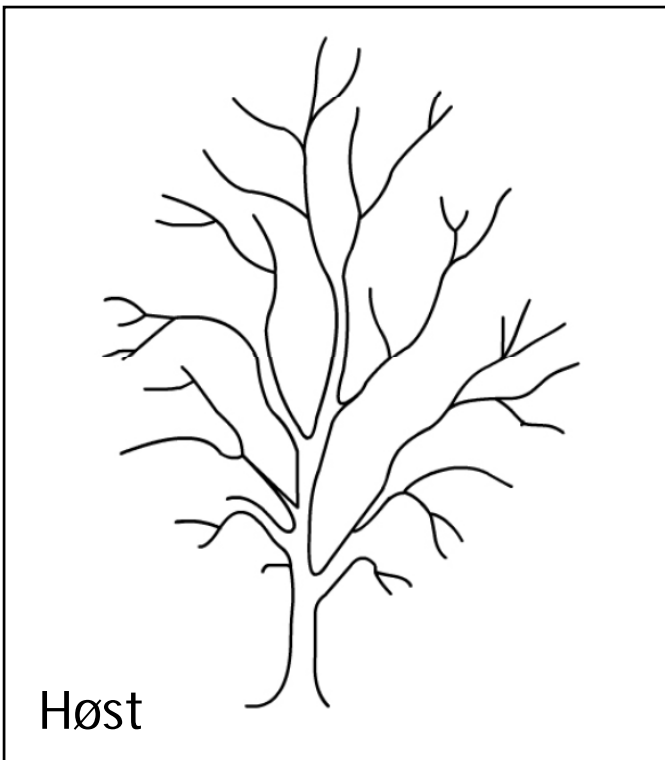
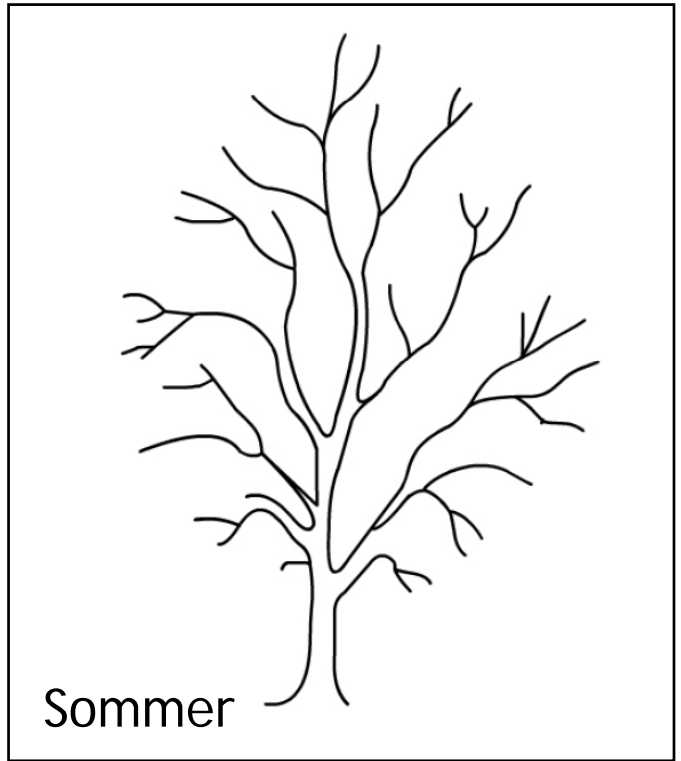
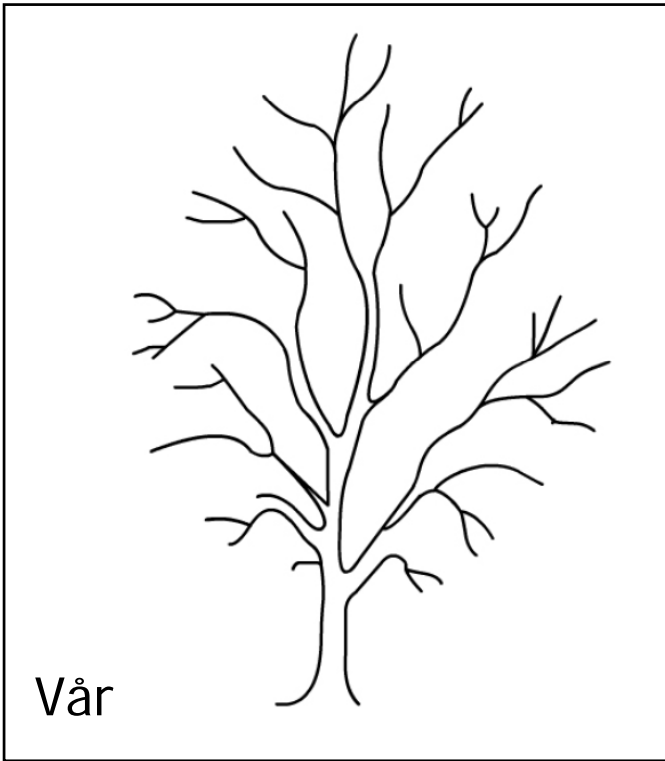


Ø ø

økologi



Tegn inn blad og frukt og fargelegg trærne i de ulike årstidene.
Tegn gjerne på andre ting, som for eksempel snømann om vinteren.



Åå

årstid

