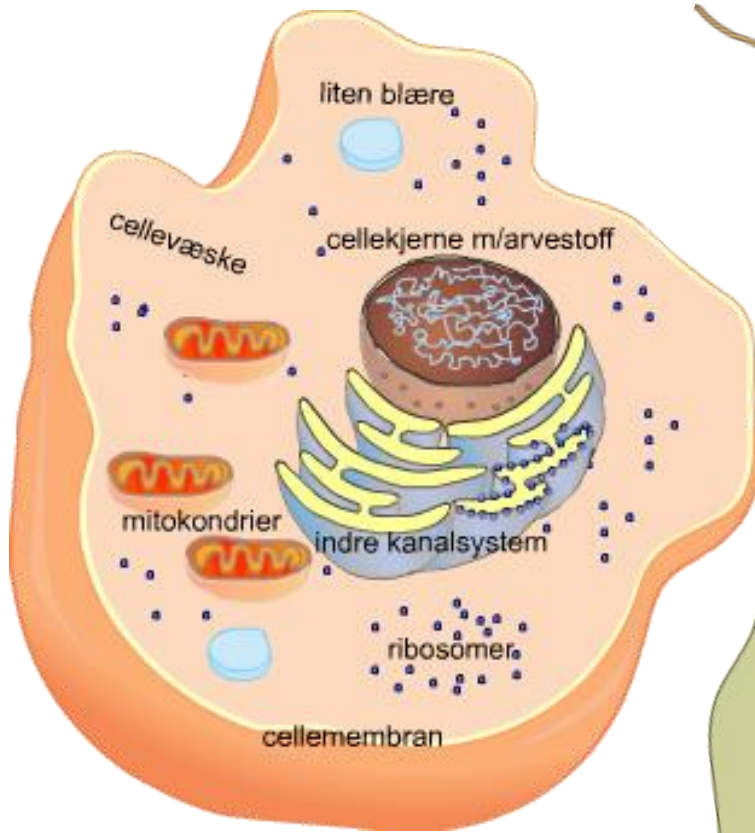
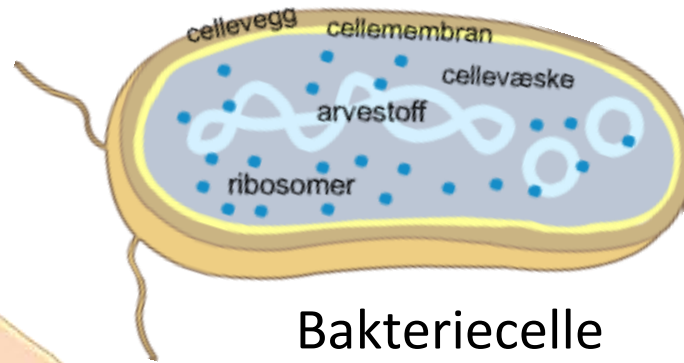


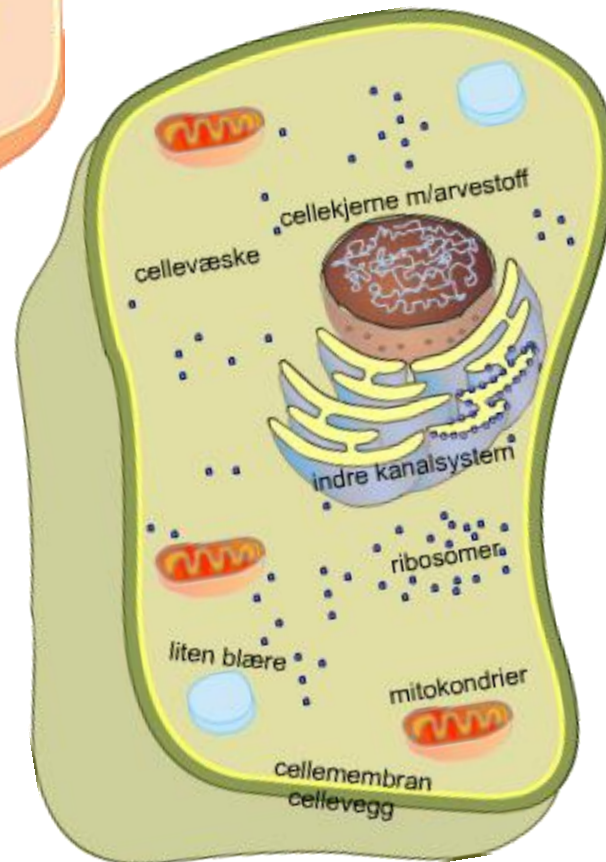
	Celler uten cellekjerne	Celler med cellekjerne		
	Bakterieceller	Planteceller	Dyreceller	Soppceller
<b>Cellemembran</b>	Ja	Ja	Ja	Ja
<b>Cellekjerne</b>	Nei	Ja	Ja	Ja
<b>DNA</b>	Ja	Ja	Ja	Ja
<b>Cellevegg</b>	Ja (protein)	Ja (cellulose)	Nei	Ja (kitin)
<b>Mitokondrier</b>	Nei	Ja	Ja	Ja
<b>Kloroplaster</b>	Nei	Ja	Nei	Nei
<b>Ribosomer</b>	Ja	Ja	Ja	Ja
<b>Indre kanalsystem</b>	Nei	Ja	Ja	Ja
<b>Blærer</b>	Nei	Ja, store (vakuoler)	Ja, små	Ja, små



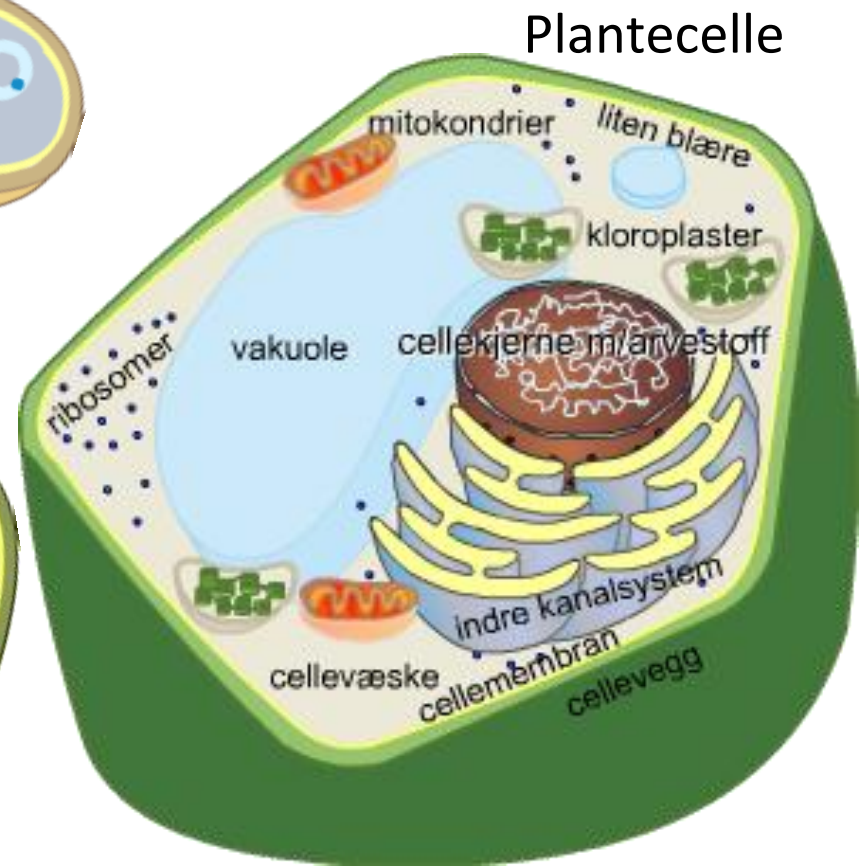
Dyrecelle



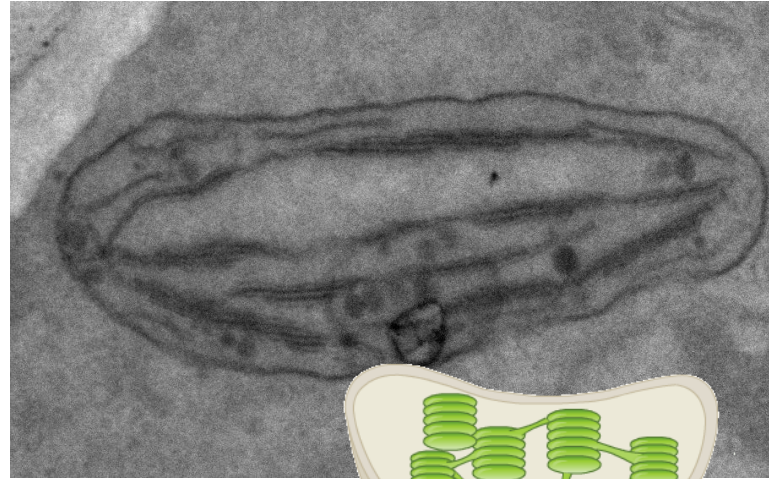
Bakteriecelle



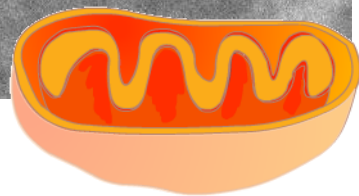
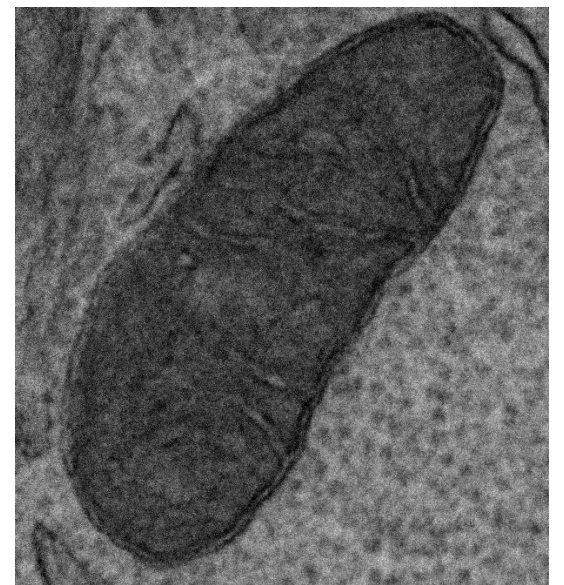
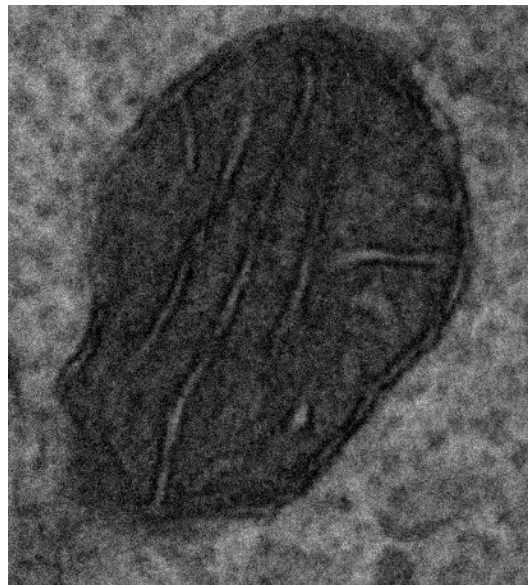
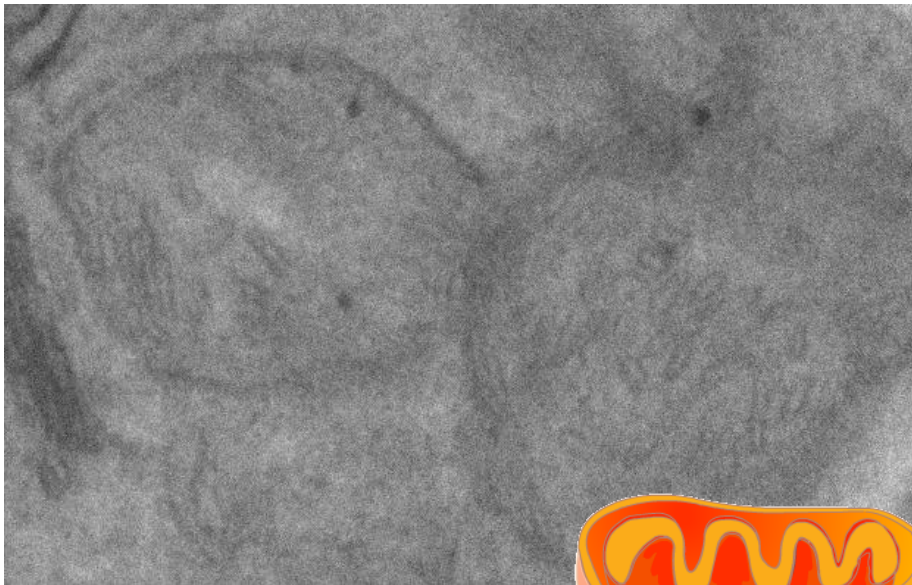
Soppcelle



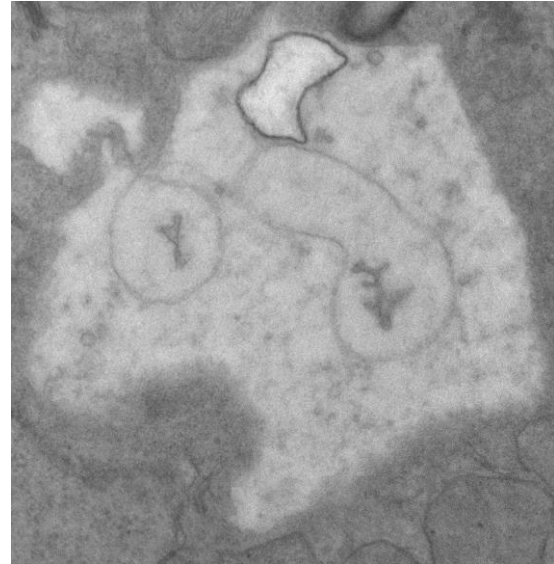
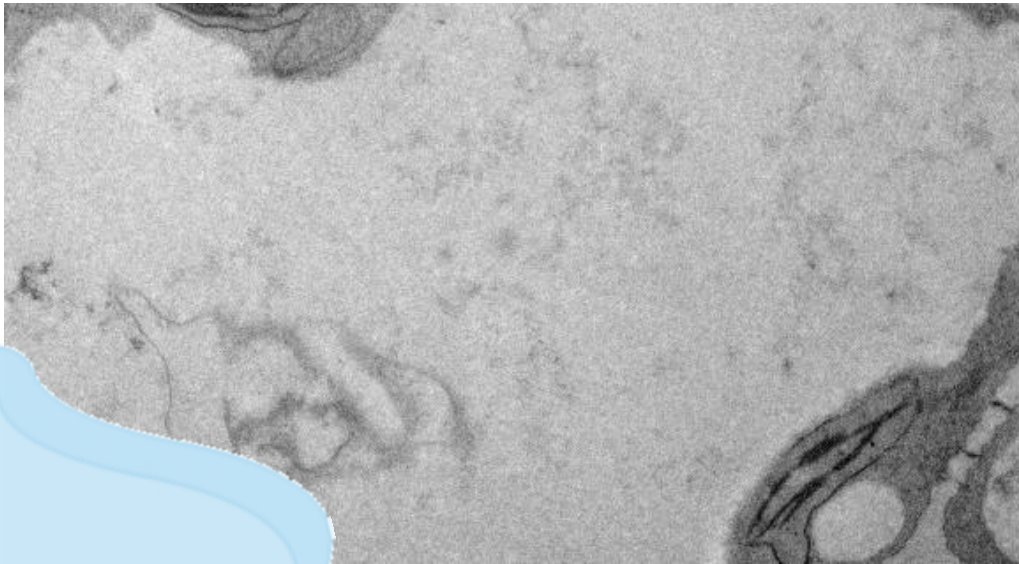
Plantecelle



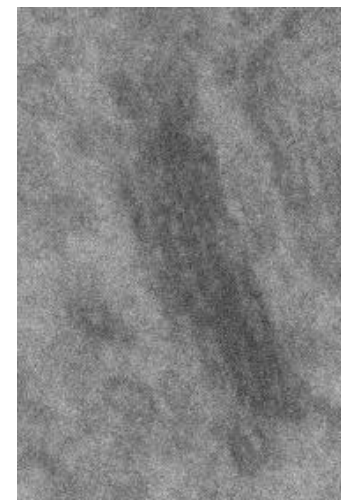
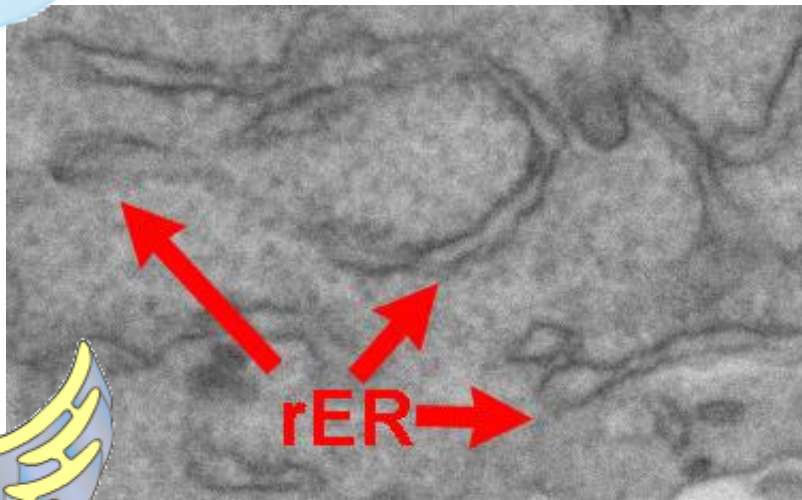
Kloroplast



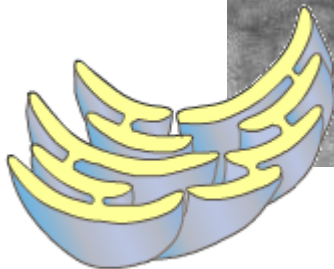
Mitochondrier



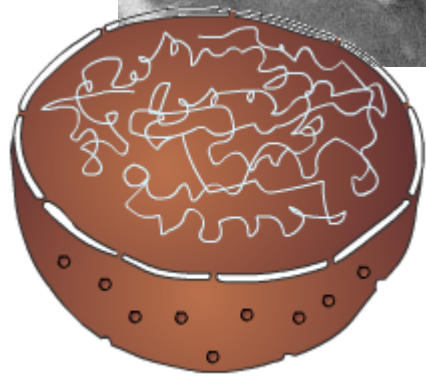
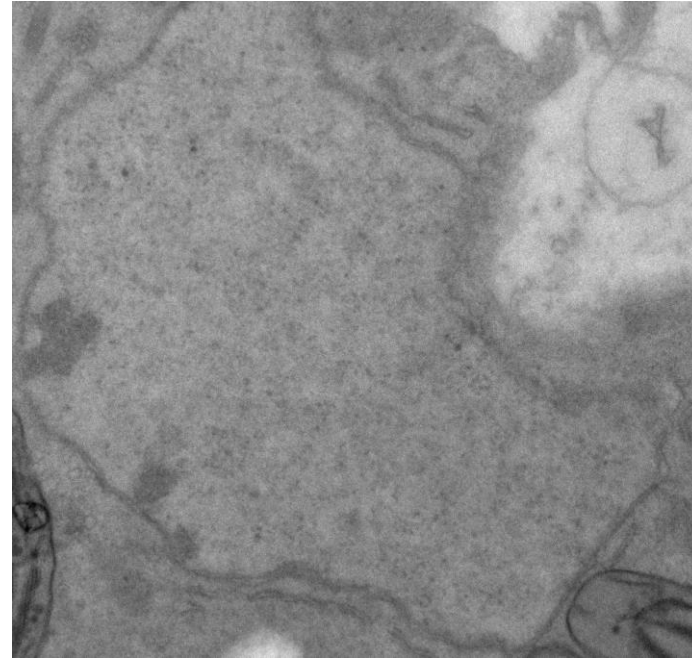
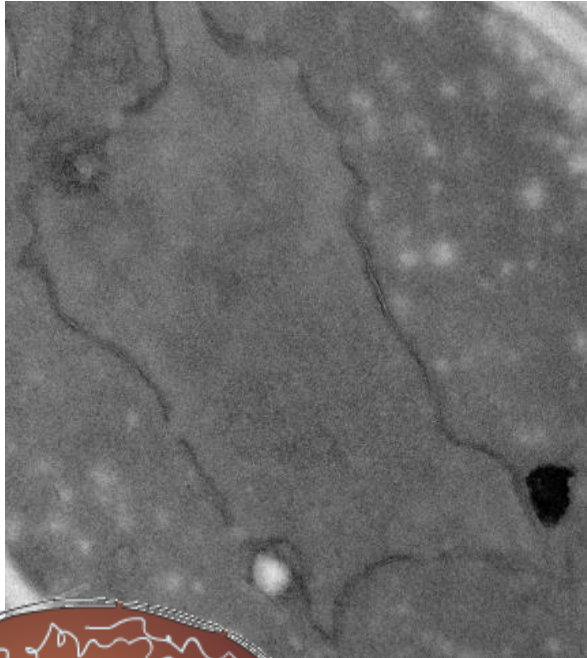
Planteceller med store vakuoler



Indre kanalsystem. Bitte små svarte prikker er ribosomer.







Cellekjerne